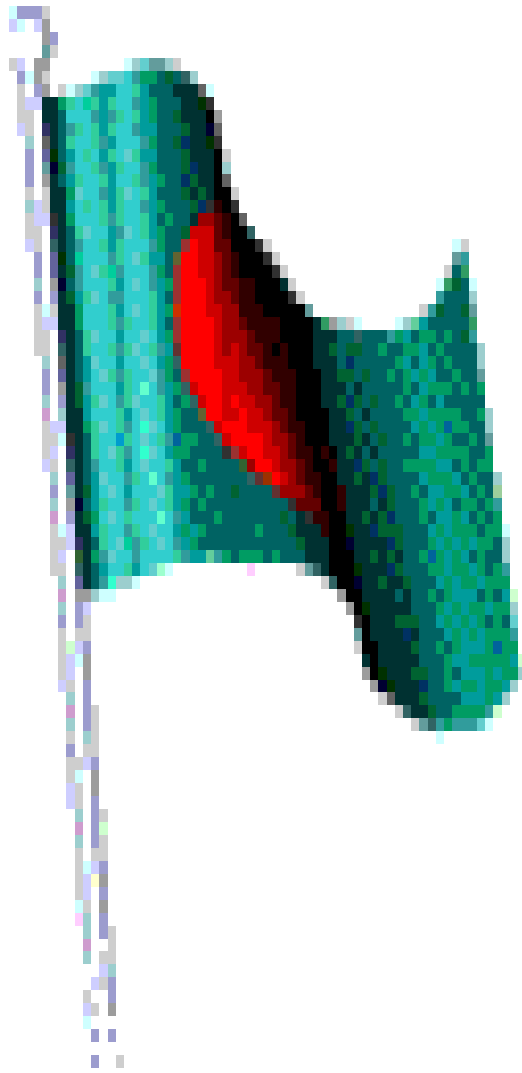




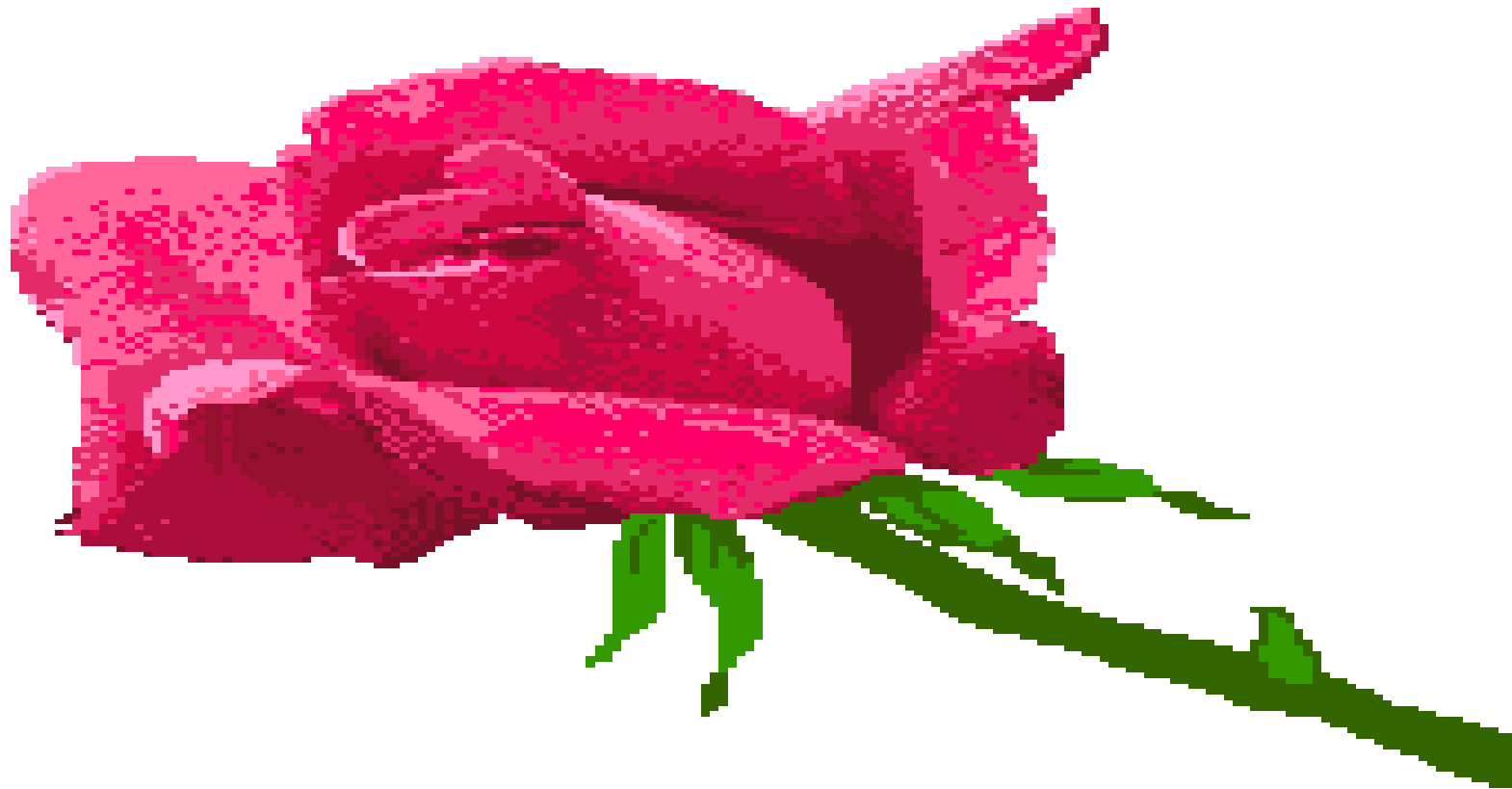
**Welcome
To
Presentation**



**Bangladesh Bureau Statistics (BBS)
Statistics and Informatics Division (SID)
Ministry of Planning
Bangladesh**



**NATIONAL STATISTICAL
ORGANIZATION (NSO)
AND IT'S ACTIVITIES IN
BANGLADESH**



WELCOME

BBS Building (Parisankhyan Bhaban)



OBJECTIVE

**BANGLADESH BUREAU
OF STATISTICS (BBS) IS
THE NSO OF
BANGLADESH**

Contents

1. BBS – HISTORY
2. HOW IT WORKS ????????
3. CHALLENGES
4. SUCCESSES
5. PLAN AND
6. Q&A?????



Ancient Bengal



- Sultanate period (1204–1529)
- Mughal period (1529–1757)
- British East India Company (1757–1858)
- British crown rule (1858–1947)
- Pakistan period (1947-1971)
- British India was divided into two parts: Pakistan (14 August 1947) and India (15 August 1947)
- Bangladesh got independence from Pakistan in 1971 under the great leadership of our father of the nation Bangabandhu Sheikh Mujibur Rahman
- Sheikh Hasina, daughter of the father of the nation, is *our honourable prime minister (4th times in history)*



**Father
of the
Nation
Bangaban
dhu
Sheikh
Mujibur
Rahman**



HOW BANGLADESH BUREAU OF STATISTICS WORKS ???





Organizational Profile



Structure of National Statistical System(NSS)

GOB

Ministry of Planning

Statistics & Informatics Division (SID)

Bangladesh Bureau of Statistics(BBS)



Profile of Bangladesh (Key Statistics)



Features	Statistics
Official Name	The People's Republic of Bangladesh
Area	1,47,570 Sq. km
Total Population	165.57 Million (As of 1st January, 2019)
Density	1116 per sq. km
Average Household Size	4.2 (BSVS 2018)
Life Expectancy at Birth	Both Sex: 72.3, Male: 70.8, Female: 73.8
Literacy Rate (Population 7+ yrs)	73.2 Percent
Literacy Rate (Population 15+ yrs)	73.9 Percent
Capital of Bangladesh	Dhaka
State Currency	Taka



Profile of Bangladesh (Key Statistics)



GDP Growth Rate (Provisional)	8.15 %
Per Capita Income (Provisional)	1909 US Dollar(2018-19)
Principal Minerals	Natural Gas, Coal, Lime, White Clay, Glass Sands etc.
Main Export Items	Ready made garments, Shrimps, Leather & Leather Garments, Tea, Medicines Ceramics etc.

About SID

- Statistics and Informatics Division (SID) is one of the three Divisions under the Ministry of Planning.
- Created in July 1975 as Statistics Division in order to provide policy guidance as well as coordinate and monitor the activities of BBS.
- Renamed as Statistics and Informatics Division (SID) in 2012 with extended activities

About BBS

- Bangladesh Bureau of Statistics (BBS), the National Statistical Organization (NSO) entrusted with
- Collecting,
- Compiling and
- Disseminating official statistics
- Created in 1974 by merging four relatively larger statistical agencies
 - i. Bureau of Statistics
 - ii. Bureau of Agriculture Statistics
 - iii. Agriculture Census Commission and
 - iv. Population Census Commission

What Is Statistics?

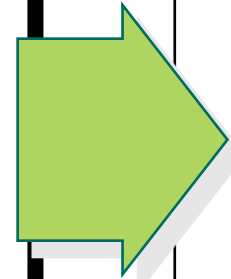
Statistics is the science of data.

It involves

1. Collecting,
2. Classifying,
3. Summarizing,
4. Organizing
5. Analyzing, and
6. Interpretingnumerical information.

What Is Statistics?

- 1. Collecting Data**
e.g., Survey
- 2. Presenting Data**
e.g., Charts & Tables
- 3. Characterizing Data**
e.g., Average



**Data
Analysis**

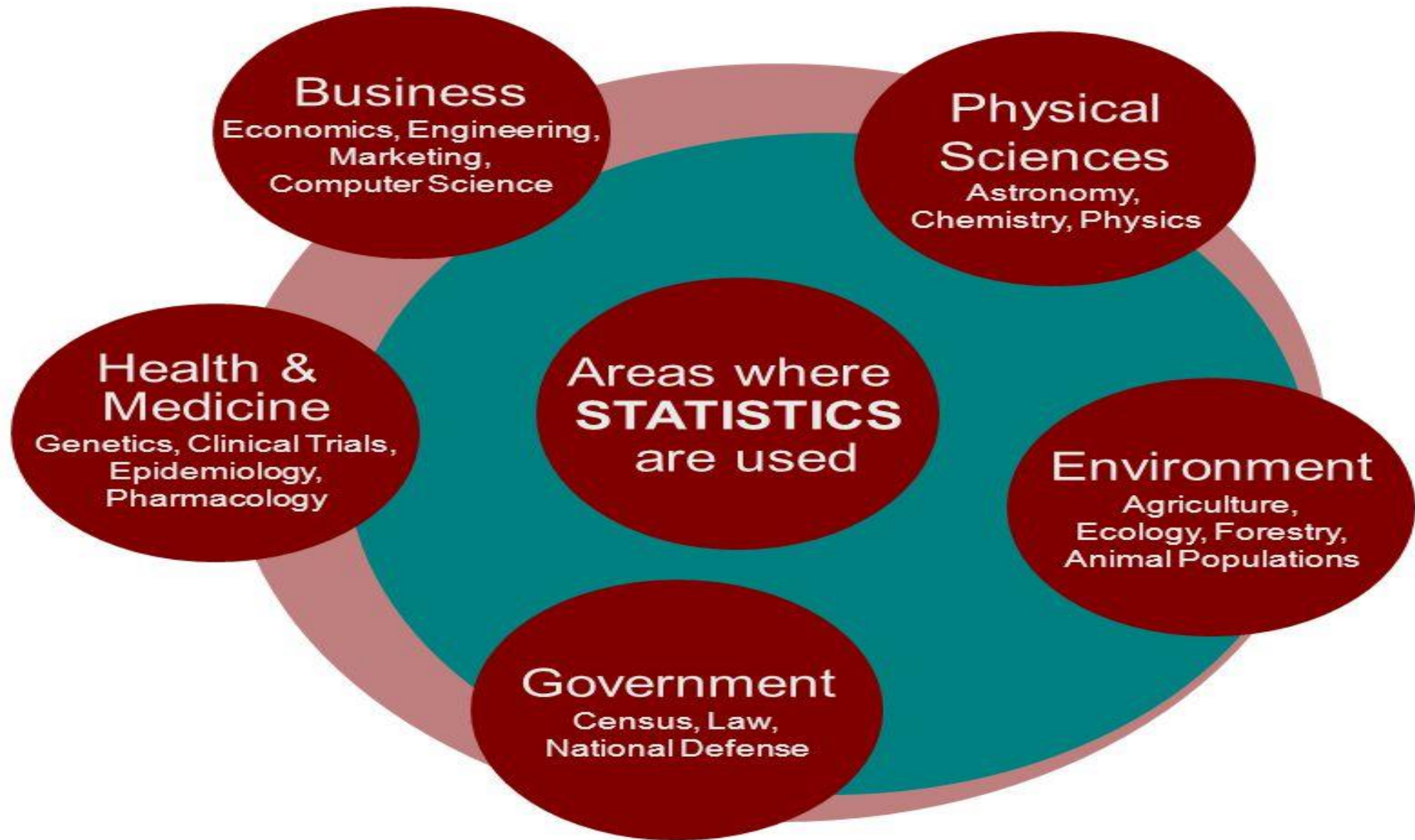


Why?

© 1984-1994 T/Maker Co.

**Decision-
Making**





Three pillars of the statistics-

1. Statistics Act 2013
2. National strategy for the Development of Statistics (NSDS) *(Approved by the Cabinet in 2013)*
3. National Data Coordination Committee (NDCC) *(Formed in 2018)*

Vision

Vision:

❖ To become a ***world-class*** provider of **authentic, relevant and timely** data in a holistic and user-friendly manner.

Mission of BBS

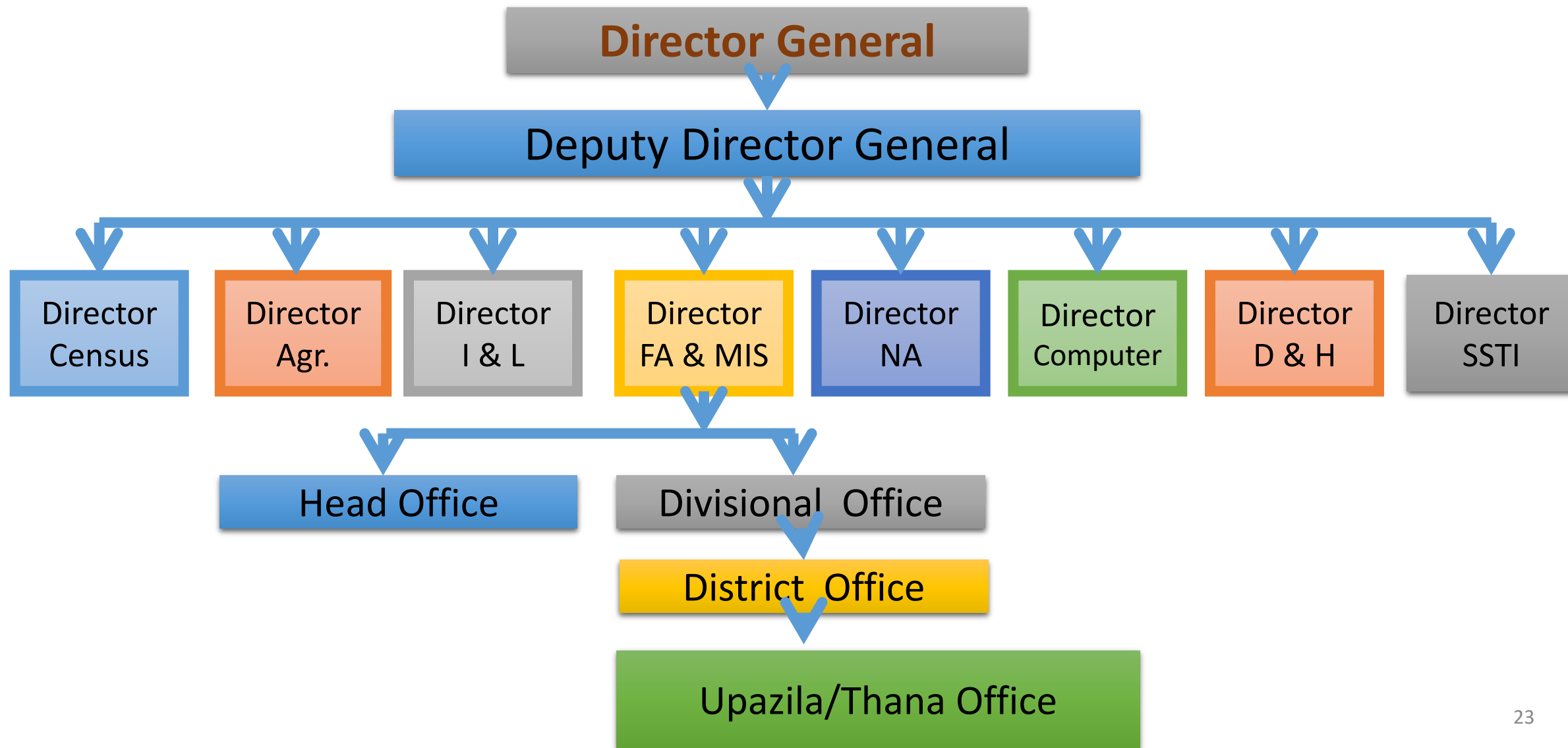
Mission:

- ❖ To establish an **integrated, professional, efficient** and effective NSS (national statistical system), under the guidance and leadership of the BBS
- ❖ To **produce and publish** official statistics that **meet the current and growing needs** of national and international users in a transparent and timely fashion using **international standards and the best statistical practices.**

BBS Building was inaugurated by the Daughter of the Father of the Nation Honorable Prime Minister, Sheikh Hasina on 25 October 1999.



Organogram of BBS



1. Subject Matter Wings

**2. Support Service and
Administrative Wings**

a. Subject Matter Wings

1. Census Wing
2. National Accounting Wing
3. Demography and Health Wing
4. Industry and Labor Wing
5. Agriculture Wing

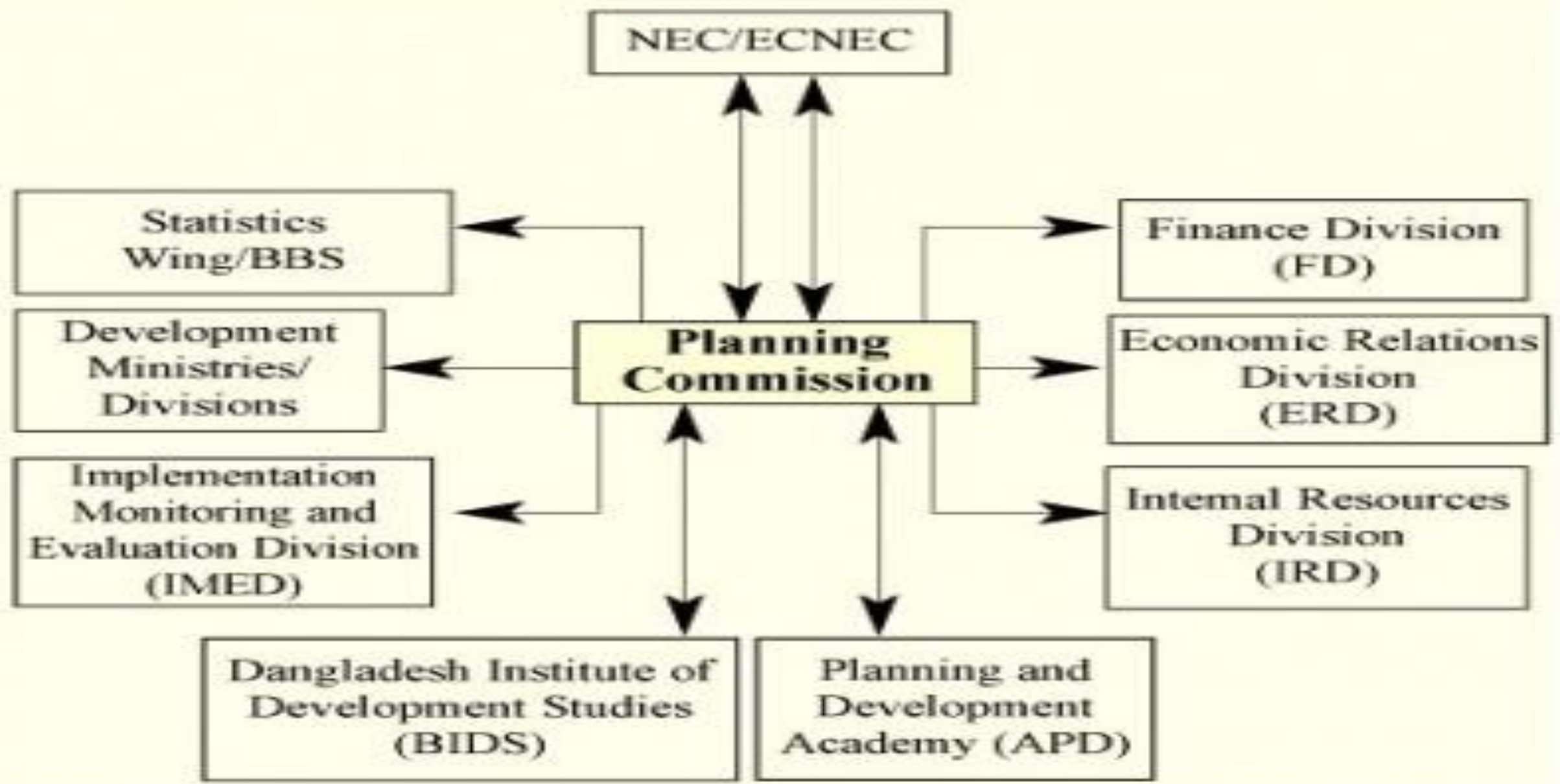
About the wings of BBS

Support Service and Administrative Wings

1. Computer Wing
2. Finance, Administration and Management Information System (FA&MIS)
3. Statistical Staff Training Institute (SSTI)

Statistics Act 2013

1. A strong legal support for statistical activities
2. Empowering BBS for conducting censuses and surveys
3. Conducting Fisheries & Livestock Census in addition to Population, Economic, and Agriculture Censuses
4. Preparing National Population Register (NPR)
5. Authority to standardize and harmonize official statistics- other agencies will require approval from BBS for conducting surveys
6. Preparing and updating National Strategy for the Development of Statistics (NSDS)





Bangladesh Bureau of Statistics



• MANDATE UNDER STATISTICAL ACT 2013 :

1. Full-fledged legal support to statistical activities
2. Preparing and updating National Strategy for the Development of Statistics (NSDS)
3. Authority to standardize and harmonize official statistics

ORGANIZATION, COORDINATION, AND MANAGEMENT OF THE NATIONAL STATISTICAL SYSTEM(NSS)

THE BBS is

- ❑ Led by a DG assisted by a DDG,
- ❑ A number of directors,
- ❑ Joint directors, deputy directors, and
- ❑ **Others 4126 officers and staffs.**

SPECIFIC PROJECTS

- ❖ Are usually managed by the steering committees chaired by the secretary, SID and
- ❖ Comprising of senior officials from the line ministries and agencies,
- ❖ Experts from development partners, universities and research organizations.

BBS has a country-wide network

- ❖ Head-office located in Dhaka is the central hub of statistical activities
- ❖ It has offices at all divisions, which are headed by Joint Director,
- ❖ At all districts, which is headed by Deputy Director and
- ❖ All Upzillas (Sub District which will eventually be headed by a first class (cadre) statistical officer.

THE SUBJECT MATTER WINGS ARE:

1.CENSUS WING : is responsible for conducting three decennial censuses:

- ❖ Population and Housing Census,

- ❖ Agriculture Census,

- ❖ Economic Census.

- Large scale ad-hoc surveys, for example

the Literacy Assessment Survey (LAS), which compiles information about the educational level of the population

- **A new initiative**

- Bangladesh Census of Slum Areas and Floating Population 2014 to fulfill data gaps regarding slum and floating population.

2. INDUSTRY AND LABOR:

- I. Survey of Manufacturing Industries (SMI),**
 - II. Labor Force Survey (LFS),**
 - III. Establishment and Institution Survey (EIS),**
 - IV. Child Labor Survey (CLS),**
 - V. Hotel and Restaurant Survey (HRS),**
 - VI. Wholesale and Retail Trade Survey (WHRTS) and**
 - VII. Other surveys in the service sector.**
- ❖ To non-farm economic activities through some regular and some ad-hoc surveys.

3. Agriculture Wing

- To compile annual estimates of the **acreage, production and yield rate of**
- **6 major crops** - Aus, Aman, Boro, Wheat, Jute and Potato
- **118 minor crops** including vegetables, fruits and flowers.
- This wing also compiles forestry and fishery statistics from administrative records kept by the Department of Forestry and the Department of Fisheries.

NATIONAL ACCOUNTING:

It is responsible for the collection, compilation and dissemination of National Accounts Statistics. The activities include: the compilation of Gross Domestic Product (GDP) and other

Aggregates (GNI, Investments, Savings, Private Consumptions, Consumption by NPI, Government Expenditure, Per Capita Income, Growth Rate of GDP etc.);

- ❖ The generation of price and wage statistics (consumer price index (CPI),
- ❖ Wage rate index (WRI),
- ❖ Building material price index (BMPI),
- ❖ And house rent index (HRI);
- ❖ The compilation of the quantum index of industrial production (QIIP) and the producer price index (PPI);
- ❖ And compilation of the foreign trade statistics (FTS).
- ❖ The household income and expenditure survey (HEIS) has been placed under this wing

5. Demography and Health

- Works relating to the population of Bangladesh and its health, morbidity and demographic status.
- **To produce statistics on all demographic events such as:**
- fertility, mortality, nuptiality & migration, collected through the Monitoring the Situation Of Vital Statistics of Bangladesh (MSVSB).
- **Other :**
 - Multiple Indicator Cluster Survey (MICS);
 - Compiling statistics on gender,
 - Violence against women etc

THE SERVICE WINGS ARE:

1. Computer Wing

Provides all type of IT support to subject matter wings of BBS.

- It is responsible for the data capture,
- Processing and tabulation of different censuses and survey finance, administration and management information system wing

2.FA&MIS)

Finance, administration and management information system (FA&MIS); is responsible for managing all the administrative and financial activities of the BBS.

3.Statistical Staff Training Institute (SSTI):

- Imparts training to all officials of BBS in statistics, administration, computer literacy, budgeting, project planning and development, public procurement etc.

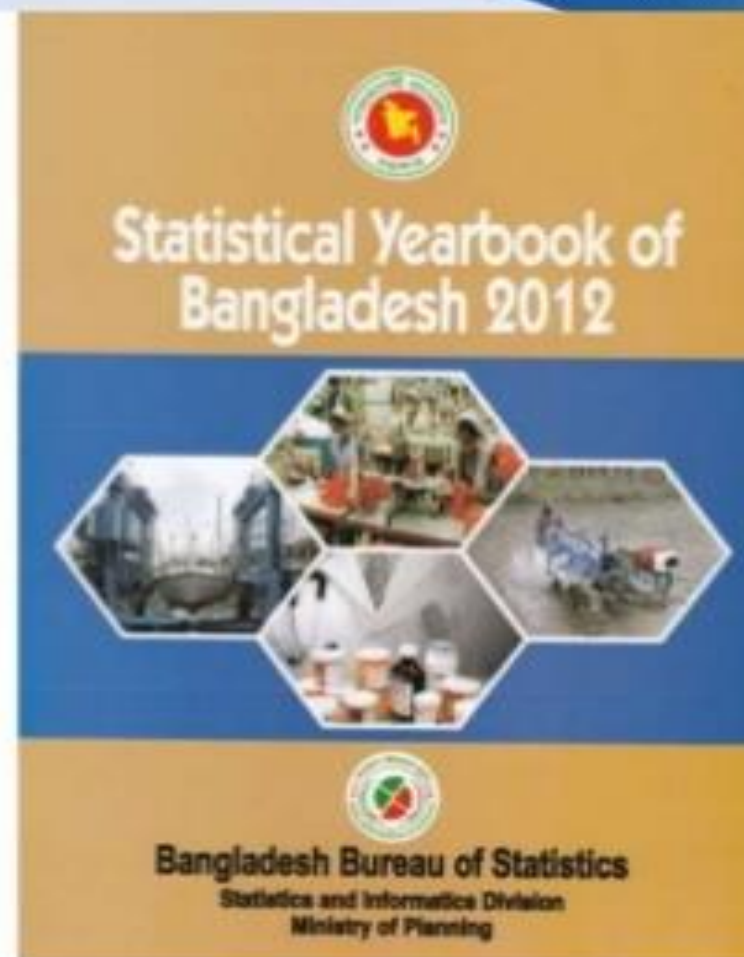
Statistical system of Bangladesh

- To provide policy decisions National Statistical Council (NSC) with 6 technical committees are providing policy support and technical backstopping to BBS.

Major Publications OF BBS

Here are some major publications of BBS.....

- Monthly Statistical Bulletin, Bangladesh
- Statistical Year Book Of Bangladesh
- Statistical Pocket Book Of Bangladesh
- National Volume Of Population Census
- Statistical Digest Of Bangladesh
- Foreign Trade Statistics Of Bangladesh



Recent Major Activities of International Importance

- BBS data played an important role in monitoring poverty reduction, unemployment rate, GDP growth and inflation rate
- The World Bank product- 'Poverty Assessment Report' which is basically based on the BBS conducted Household Income and Expenditure Survey (HIES)
- Representation in the Technical Advisory Group (TAG) of UNESCAP
- Provide inputs to Human Development Report Office (HDRO) for Human Development Report
- Work in progress for 'New Data Revolution'

Identification and sources of data:

REGULAR SURVEYS ARE:

1. Household Income and Expenditure survey (HIES)
2. Sample Vital Registration System (SVRS)
3. Labor Force survey (LFS)
4. Agriculture Cluster Surveys
5. Child Nutrition Survey
6. Survey of Manufacturing Industries (SMI)
7. Annual Establishment and Institutions survey
8. Multiple indicator cluster survey and
9. Literacy Assessment Survey

It also compiles export and import statistics from shipping documents, GDP and consumer price index (CPI) on regular basis.

● **NOW**, Key findings are hosted in website and also in CD

- ❖ As per present practice raw data (unit level data) are supplied to the users on payment
- ❖ The raw dataset also include questionnaire, instruction manual and data format
- ❖ In case of request made by the researchers and students, data is generally supplied in a reduced rate or free of cost
- ❖ BBS is now planning for wide and easy access of data to the relevant users
- ❖ Developed dynamic web along Digital Data Network (DDN) data communication facilities with 6 Divisional RSO offices

Ongoing projects and initiatives

1. MICS-2018
2. National Household Database (NHD) Project
3. Population and Housing Census 2021
4. NSDS Implementation Support Project
5. Monitoring the Situation of Vital Statistics of Bangladesh (MSVSB)
6. Agriculture (Crop, Fishery & Livestock) Census 2019
7. Improving Labor Statistics
8. Labor Market Information System(LMIS)through Panel Survey Project
9. Digitization of BBS Publications and
10. Online Secondary Data Collection Project
11. Project with UN Women



Statistical data communication to users

- For statistical data communication physical network has been established
- Three sophisticated ICT labs have been developed for training and to assist in development of ICT based statistical system in BBS
- BBS has a rich printing press at its main building
- The current website of BBS is widely used by the data users
- The findings of all case surveys and derived (such as inflation, CPI, GDP etc.) are uploaded in the web site on regular basis
- BBS started to arrange press conference in each month to release CPI and discuss other important issues
- More interactions with Electronic and Print media are being pursued

We planned to:

- ❖ Improve ICT backbone & data communication system
- ❖ Improve staff skills & motivation
- ❖ Provide more logistics support , net working and user friendly data retrieval methods
- ❖ Internet, Website and Data Archiving facility
- ❖ Arrange early dissemination of report and publications
- ❖ Prepare new sampling frame for surveys
- ❖ Develop national geographical information system and electronic data base

Challenges –Martin Luther king- I have a dream

- **Lack of proper training**
- **Lack of logistical supports like transportation.**
- **Insufficient number of computers**
- **Lack of coordination between different organizations**
- **Publicity lacking**

Recommendations

- Proper training programs both national and international
- Inclusion of a Client's Charter such as the one in Malaysia
- Make it compulsory for different root level government offices to provide monthly data to BBS.
- Tracking the progress of NSDS by creating a high-level committee

Robert Frost -The woods are lovely dark and deep . But I have promises to keep . Miles to go beforeI sleep





THANK YOU